

EchoLife EG8010H GPON Terminal

Quick Start

Safety Precautions

To use the device properly and safely, read the safety precautions carefully before using the device and strictly observe these precautions when using the device.

Safety precautions:

- Store devices and accessories in temperature -10°C to $+35^{\circ}\text{C}$ and relative humidity 30%–85% RH for at most 9 months. If the ambient temperature or relative humidity is overhigh or overlow, the device may be faulty.
- Used only indoors. Do not lead metallic cables, such as network cables and telephone lines outdoors.
- Do not look directly into the optical port without eye protection.
- Keep the device out of the reach of children as the components or accessories may be swallowed.
- Install the device in strict compliance with the requirements of the supplier. Reserve a space of at least 10 cm above and around the device for heat dissipation. During the installation, keep the device away from electric appliances that generate strong magnetic or electric fields, such as microwave ovens, refrigerators, and mobile phones.
- The described input voltage range should comply with the local power grid. For example, the input voltage of the adapter is 200–240 V AC for European Union; the input voltage of the adapter is 100–140 V AC for America.
- If the power adapter is damaged and its internal circuit is exposed due to manmade factors, do not touch the exposed circuit, which may bring safety risks.
- Only power adapters delivered with the device can be used. Otherwise, the device may be abnormal or unsecure.
- Dry your hands before connecting or disconnecting cables. Stop the device and switch off the power before connecting or disconnecting cables.

- Do not place any object on the device, so that the device will not be damaged due to overheating or deformation.
- Prevent objects, such as metal, from entering the device through the heat dissipation hole.
- Switch off the power and disconnect all cables, including the power cable, optical fiber, and network cable, during periods of lightning activities. The socket-outlet shall be installed near the power adapter and shall be easily accessible. Before use the power adapter, please check no damage on the adapter.
- Do not lead the strength member of the optical fiber or other metal parts indoors. Do not install telephone lines, network cables, power adapters or power adapter cables outdoors. Adopting these measures will help prevent device damage and bodily injuries which are especially prone during thunderstorms.
- If an abnormality occurs, for example, liquid entering the device, smoke, unusual sound, and smell, stop the device immediately, switch off the power, disconnect all cables (such as the power cable, optical cable, and network cable) to the device, and contact the authorized service center.
- Do not disassemble the device without permission. In the case of a device fault, contact the authorized service center.
- Dispose of the packing materials, expired batteries, and old or abandoned devices in accordance to local laws and regulations (recycling them is strongly recommended).
- Do not change the structure, safety design, or performance design of the device without prior authorization.
- The device should be installed and operated with a minimum distance of 20 cm between the radiator and your body.

Fireproof precautions:

- Keep the device away from large heat source equipment, bare flames, and high-power devices, such as electric heaters, candles, and blow drier, to eliminate safety risks.
- If there are aged cables or power socket facilities on the power supply line to or near the device, replace them in time to eliminate safety risks. The power supply voltage of the device must meet the input voltage requirement.

Product Overview

Product	Function
EG8010H	1 Ethernet port

Technical Specifications

- Power adapter input: 100–240 V AC, 50–60 Hz
- System power supply: See the nameplate on the device.
- Ambient temperature: 0°C to +40°C
- Ambient humidity: 5%–95% (non-condensing)

For other technical specifications, see the following table.

GPON Terminal	Weight(Including the Power Adapter)	Maximum System Power Consumption
EG8010H	About 300 g	≤ 2.5 W

NOTE

If the appearance of the product in this document differs from the actual product, the actual product prevails.

Installing the GPON Terminal

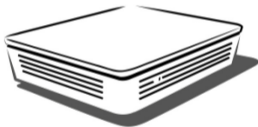
CAUTION

1. Do not install PON terminals outdoors or on the outdoor cabinets.

2. PON terminals can be mounted onto a wall or be placed on a workbench. Do not install PON terminals in other modes, such as the ceiling.
3. The terminal cannot be connected to other devices such as GPON terminals, switch and router.
4. After the PON terminal is installed with a foot-stand, do not remove the foot-stand unless it is necessary. When you remove the foot-stand, apply force evenly on the two sides of the foot-stand to avoid damages to the PON terminal.

Mounting a GPON terminal on the desk

The schematic diagram for placing the device on a desk horizontally is as follows:

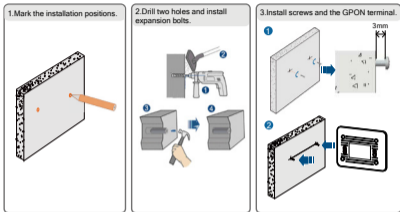


Mounting a GPON terminal onto the wall

Step 1 Mark the positions of two holes used for mounting a GPON terminal, ensure that the two holes have the same spacing as the two mounting holes.

Step 2 Select a proper drill according to the outer diameter of the screws. Use a hammer drill to drill the marked positions on the wall. Then clean the wall and install two expansion bolts.

Step 3 Use a screwdriver to fasten the screws into the expansion bolts, leaving the heads of the screws 3 mm over the wall. Then install the GPON terminal to the screws.



Connecting Cables

Step 1 Use an **optical fiber** to connect the **optical port** on the ONT.

NOTE

- The optical connector connected to the **OPTICAL** port is an SC/APC connector.
- To ensure normal use of fibers, make sure that the fiber bend radius is larger than 30 mm.

Step 2 Use a network cable to connect the **LAN** port to an Access Point.

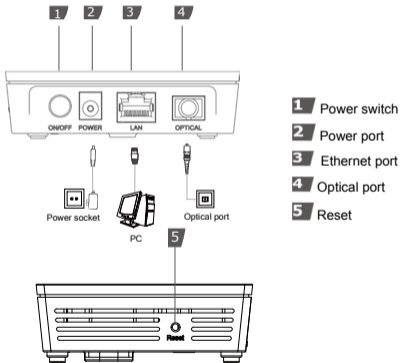
Step 3 Use a power adapter to connect the **POWER** port to the power socket.

 NOTE

Do not use any power adapters that are not in the standard configuration. Otherwise, the device may be abnormal or unsafe.

Step 4 Press the **ON/OFF** power switch.

The connections between the EG8010H and other devices are shown as follows:



Logging in to the Web Configuration Window

Step 1 Set the IP address of the PC in the same subnet as the management IP address of the PON terminal.



You can find the default management IP address on the nameplate of the device.

Step 2 Enter the management IP address of the PON terminal in the address bar of Internet Explorer and press Enter.

Step 3 The login window is displayed.

Step 4 In the login window, select your preferred language, enter the user name and password (printed on the nameplate of the device.), and click Login. After the password is authenticated, the web configuration window is displayed.



- If you do not perform any operations after logging in to the system for five minutes, you will exit the system and the system automatically returns to the login interface.
- The system will be locked if you input incorrect user name and password three consecutive times. One minute later, it will be unlocked.
- Change the initial password after logging in to the web page.

Indicator Descriptions



Table 1-1 Indicator status description 1

Indicator	Status	Description
LAN	Steady on	The Ethernet connection is in the normal state.
	Blinking	Data is being transmitted on the Ethernet port.
	Off	The Ethernet connection is not set up.
LOS/PON	See Table 2.	
POWER	Steady green	The terminal is powered on.
	Off	The power supply is cut off.

Table 1-2 Indicator status description 2

Status No.	Status		Description
	PON	LOS	
1	Off	Off	The GPON terminal is prohibited by the upper-layer device, contact the service provider for help.
2	Blinks twice a second	Off	The GPON terminal attempts to set up a connection with its upper-layer device.
3	Steady on	Off	A connection is set up between the GPON terminal and its upper-layer device.
4	Off	Blinks once two seconds	The GPON terminal is not connected to optical fibers or does not receive optical signals.
5	Blinks twice a second	Blinks twice a second	The GPON terminal is a rogue terminal, contact the service provider for help.
6	Blinks once two seconds	Blinks once two seconds	The hardware is faulty.

Disposal and recycling information



The crossed-out wheeled-bin symbol on your product, battery, literature or packaging reminds you that all electronic products and batteries must be taken to separate waste collection points at the end of their working lives; they must not be disposed of in the normal waste stream with household garbage. It is the responsibility of the user to dispose of the

equipment using a designated collection point or service for separate recycling of waste electrical and electronic equipment (WEEE) and batteries according to local laws.

Proper collection and recycling of your equipment helps ensure electrical and electronic equipment (EEE) waste is recycled in a manner that conserves valuable materials and protects human health and the environment, improper handling, accidental breakage, damage, and/or improper recycling at the end of its life may be harmful for health and environment. For more information about where and how to drop off your EEE waste, please contact your local authorities, retailer or household waste disposal service or visit the website www.huawei.com/en/product-certification.

Reduction of hazardous substances

This device and any electrical accessories are compliant with local applicable rules on the restriction of the use of certain hazardous substances in electrical and electronic equipment, such as EU REACH, RoHS and Batteries (where included) regulations, etc. For declarations of conformity about REACH and RoHS, please visit our web site www.huawei.com/en/product-certification.

ErP product information

Hereby, Huawei Technologies Co., Ltd. declares that the product meets the directive 2009/125/EC and its implementation regulation (EC) NO 1275/2008 amended by (EC) 278/2009, (EC) 642/2009,

(EU) 617/2013, (EU) 801/2013, and its implementation regulation (EC) NO 278/2009.

If all wired network ports are connected and all wireless network ports are activated, the power consumption of the product in **networked standby** is less than 20 W.

For the product information displayed on the manufacturers' freely accessible websites required by (EU) No 801/2013, please visit www.huawei.com/en/product-certification.

FAQ

The LOS indicator blinks.

- If the LOS indicator blinks once two seconds, check whether the pigtail fiber is properly connected and the connector is clean.
- If the GPON terminal blinks twice a second, contact the service provider for help.

The PON indicator is off.

- Check whether the **OPTICAL** port and optical fiber is properly connected.
- The GPON terminal fails to register with the upper-layer device. Contact the service provider for help.

How to reset the GPON terminal?

- Press **Reset** by using a needle-type object.

How can I restore factory defaults?

- Press Reset by using a needle-type object for longer than 10s to restore factory defaults and reset the GPON terminal. If the indicator is off and then is lit, the system restarts successfully.



Warranty Card

Thank you for choosing Huawei Technologies Co., Ltd. To get better services, please read this warranty card carefully, fill in the required information, and preserve this card in good condition.

User Information

Personal or

company's full name: _____

Address/Postal Code: _____

Telephone: _____

Email: _____

Product Type: _____

Product Serial Number: _____

Purchase Date: _____

Invoice Number: _____

Dealer's Name: _____

Dealer's Address: _____

Dealer's Telephone: _____

Preserve well. No reissue.

Dealer's Seal



Limited Warranty

Subject to the exclusions contained below, Huawei Technologies Co., Ltd. (Huawei for short) warrants its access terminals ("Products") to be free from defects in materials and workmanship under normal consumer usage for one year from the date of purchase of the product ("Warranty period"). During the warranty period, a Huawei authorized service partner shall remedy defects in materials and workmanship free of charge.

Special Notice:

1. The warranty card shall be applicable only after being stamped by the dealer.
2. The warranty card must be preserved in good condition and free of any scratch or alteration.
3. To claim such service for defects that are not included in the following exclusion terms, the warranty card and the invoice that records that product serial number shall be presented to a Huawei authorized service partner.

Exclusion:

In any of the following cases, the warranty card becomes unenforceable or inapplicable without prior notice:

1. The defects are caused by improper handling in transportation and assembly.
2. The defects are caused by the fact that the product is dismantled or altered by anyone that is not from a Huawei authorized service partner.
3. The defects are caused by the fact that the product is used in a harsh environment that is not suitable for the operation of the product.
4. The defects are caused by any force majeure including but not limited to fire, earthquake, lightning, and tsunami.
5. The defects are caused by the fact that the product is used or handled incorrectly, roughly or not as instructed in the applicable User Guide.
6. The normal wear and tear, including but not limited to the normal wear and tear of the shell and the power module, shall not be covered by the limited warranty.
7. The warranty card is altered or illegible, or the product serial number recorded on the warranty card is inconsistent with the actual one imprinted or labeled on the product.

In any case that is not covered by this limited warranty or should the warranty expire, Huawei shall charge for the service(s) claimed for the products if the product is still remediable. Huawei reserves all rights to interpret this limited warranty.



Huawei Technologies Co., Ltd.

Address: Huawei Industrial Base

Bantian, Longgang

Shenzhen 518129

People's Republic of China

Website: <http://www.huawei.com>





Copyright © Huawei Technologies Co., Ltd. 2017. All rights reserved.

No part of this document may be reproduced or transmitted in any form or by any means without prior written consent of Huawei Technologies Co., Ltd.

Trademarks and Permissions



and other Huawei trademarks are trademarks of Huawei Technologies Co., Ltd.

All other trademarks and trade names mentioned in this document are the property of their respective holders.

Notice

The information in this document is subject to change without notice. Unless otherwise stated, this guide serves only as a guide. All statements, information, and recommendations in this document do not constitute a warranty of any kind, expressed or implied.

Issue: 01(2017-08-10)
BOM number: 31509178